



# NORTH GONJA DISTRICT ASSEMBLY

(MINISTRY OF LOCAL GOVERNMENT AND RURAL DEVELOPMENT)



ANNUAL ACTION PLAN (2022)

NGDA-DPCU October , 2021

# NORTH GONJA DISTRICT ASSEMBLY



In case of reply the Number and date of this letter should be quoted.

Post Office Box 1  
Daboya – S/R  
Tel: 233-0372094150  
233-0972094158

GPS Address:N2-00033-3377  
Email: [info@northgonjadistrict.gov.gh](mailto:info@northgonjadistrict.gov.gh)  
Website: [www.northgonjadistrict.gov.gh](http://www.northgonjadistrict.gov.gh)

Our Ref:NGDA/AB/  
Your Ref:.....

Date : 23<sup>rd</sup> October, 2021

## SUBMISSION OF DRAFT ANNUAL ACTION PLAN (AAP-2022)

We herewith submit to you the Annual Action Plan for the district as required by Regulation LI 2232 of the National Development Planning System for your study and further action.

Thank you.

FOR; DISTRICT CHIEF EXECUTIVE

ALHASSAN ABDULAI  
(DISTRICT COORDINATING DIRECTOR)

1.THE DIRECTOR  
NATIONAL DEV'T PLANNING COMMISSON  
SWITCHBACK ROAD  
P.BOX CT-633  
ACCRA- GHANA

HEAD OF SERVICE  
LOCAL GOV'T SERVICE  
P.O. BOX BM 396  
MINISTRIES-ACCRA

2. THE REGIONAL MINISTER  
THE MNISTER  
SAVANNAH REGIONAL CO-ORD. COUNCIL  
DAMONGO

3. MLGRD  
P.O.BOX 001  
P.O.BOX PM 5  
MINISTERIS-ACCRA

ATTN;  
REGIONAL ECONOMIC PLANNING OFFICER

## Table of Contents

|   |    |
|---|----|
| <b>EXECUTIVE SUMMARY</b> .....  | 6  |
| <b>i. Background</b> .....  | 6  |
| <b>ii. Management and Financing Of The Plan</b> .....   | 6  |
| INTRODUCTION. ....  | 7  |
| VISION OF THE DISTRICT .....  | 7  |
| MISSION OF THE DISTRICT .....   | 7  |
| DISTRICT OBJECTIVES IN LINE WITH THE LTNDP 2018-2021 .....  | 9  |
| PLAN IMPLEMENTATION TOOLS .....   | 10 |
| MONITORING AND EVALUATION.....  | 10 |
| REPORTING .....   | 10 |
| 1.0 THEMATIC AREA: ECONOMIC DEVELOPMENT (BUILD AN INDUSTRIALISED, INCLUSIVE AND RESILIENT ECONOMY)..... | 11 |
| 1.2 Focus Area : Local Economic Development .....   | 11 |
| 1.3 Focused Area; Agriculture and Environment .....   | 14 |
| 1,3,1 Focused Area; Agriculture .....   | 16 |
| 2.0 SOCIAL DEVELOPMENT .....  | 18 |
| Goal: Create opportunities for all .....  | 18 |
| .2.1 Focused Area: quality education for all .....  | 18 |
| 2.2 Focused Area; Health .....  | 23 |
| 2.3 Focused Area; Welfare and Child Rights.....   | 28 |
| Objectives .....  | 28 |
| 3.0: ENVIRONMENT, INFRASTRUCTURE AND HUMAN SETTLEMENTS .....  | 30 |
| Goal: Safeguard the natural environment and ensure a resilient built environment .....                  | 30 |
| 3.1 Focused Area; Roads , Electricity and water .....   | 30 |
| 3.2 Focused Area: Climate Variability and Change .....  | 31 |
| 3.3 Disaster prevention and management .....  | 33 |
| 3.4 Human Settlements Development and Housing .....   | 34 |
| 1. Promote sustainable, spatially integrated and orderly development of human settlements .....         | 34 |
| 4. GOVERNANCE CORRUPTION AND ACCOUNTABILITY .....   | 35 |
| Goal: Maintain A Stable, United and Safe Country .....  | 35 |

5.0 EMERGENCY PREPAREDNESS AND RECOVERY (INCLUDING COVID- 19)..... 38  
Goal: mainstream Emergency Planning and Preparedness into Ghana’s Development Planning Agenda at All Levels to Respond to Potential Internal and External Threats (Including Covid-19)..... 38  
6.0 IMPLEMENTATION, COORDINATION, MONITORING AND EVALUATION ..... 39  
Goal : improve delivery in development outcomes at all levels..... 39

## EXECUTIVE SUMMARY

### i. Background

The PNDC Law 207 of 1988, Acts 462 (1993) and 480 (1994) of the 1992 Republican Constitution, established the District Assemblies as the highest political and planning authorities at the grassroots level, with well-defined functions. The decentralized planning system seeks to provide a mechanism for more effective national development based upon participation of the entire body politic and with a view to coming up with a national development plan which reflects the needs and aspirations of the ordinary people, as well as those of all the sectors of the national economy

The DMTDP under the MTNDPF ; **An Agenda For Jobs: Creating Prosperity And Equal Opportunity For All 2018-2021** has been mainstreamed with the Sustainable Development Goals (SDGs), African Union Agenda 2063 and the Paris Climate Change Agreement (COP21). The Medium-Term Policy Framework is anchored on to:

1. Economic Development; **building a prosperous economy**;
2. Social Development; **creating opportunities for all**
3. Environment, infrastructure and Human settlement; **Safeguard the Natural Environment and Ensure A Resilient Built Environment**
4. Governance, Corruption, and Public accountability; **Maintain A Stable, United and Safe Country**
5. Emergency Planning And Response (Including Covid-19 Recovery Plan) ;**Mainstream emergency planning and preparedness into Ghana's development planning agenda at all levels to respond to potential internal and external threats (including COVID-19)**
6. Implementation, Coordination, Monitoring And Evaluation: **Improve delivery of development outcomes at all levels**

The 2021 composite action plan document was prepared in line with the North Gonja District Medium Term Development Plan (2022-2025). It defines key activities that need to be pursued in order to achieve the vision mission of the North Gonja District Assembly

It adopted a participatory approach and its contents are a true reflection of the views and aspirations of the good people of the district

The overall district development goal therefore is to; *achieve an improved living standard of the people through a refined and competitive business environment, enhanced human resource development and social services, with equal opportunities for all in a decentralized democratic and peaceful environment.* The broad strategic direction of the district goal is compatible with the six(6) main thematic areas of the Long –Term Goals and development framework.

### ii. Management and Financing Of The Plan

The overall management of the plan shall be the responsibility of the District Assembly, with the District Planning and Co-ordinating Unit (DPCU) playing the lead role in the implementation, monitoring and evaluation. The DPCU shall liaise with all relevant stakeholders in the implementation of the plan and shall submit periodic reports for the study of the Executive Committee of the District Assembly, which shall in turn, then report the progress of the plan implementation to the Full House of the District Assembly.

The plan which shall cost about (¢00.00) shall be financed through the following sources:

- -District Assemblies' Common Fund (DACF)
- -District Development Facility
- -Public Investment Programme (PIP)
- -External Support Agencies (ESA) / Development Partners
- -District Assembly locally generated revenue
- -Private Sector
- -Community Contribution.

## **INTRODUCTION.**

### **VISION OF THE DISTRICT**

The vision of North Gonja is to achieve overall socio-economic development of the district so as to enhance the living standard of the people

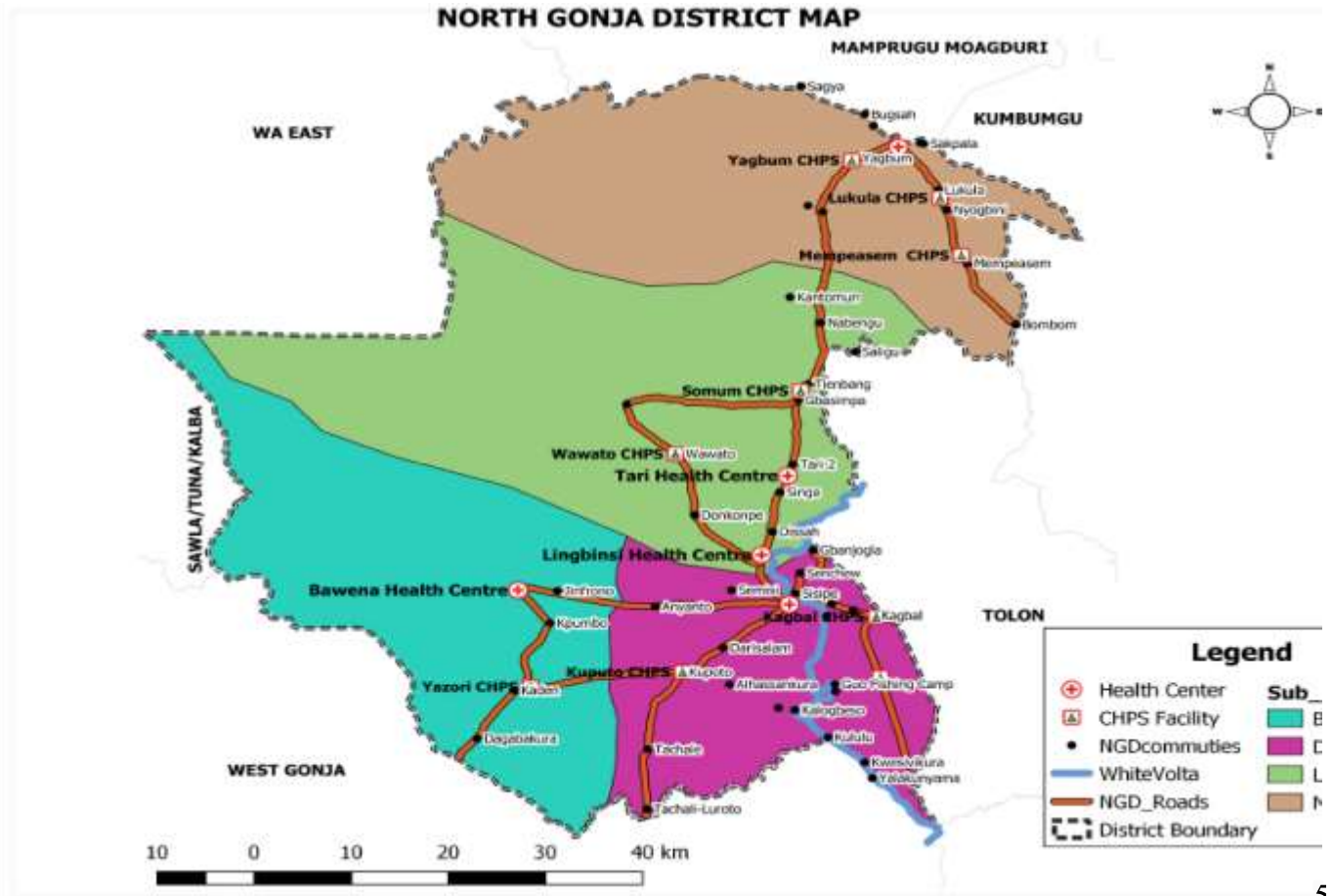
### **MISSION OF THE DISTRICT**

The North Gonja District exists to improve the quality of life of the people by harnessing human and material resources for the provision of basic infrastructure and socio-economic services.

The North Gonja District is a relatively new district carved out of the West Gonja District in 2012, with a population of 43,547 made up of 49.6 percent males and 50.4 percent females. Out of the total population, a majority of the population are predominantly rural; 37,037 (85.1%) resides in the rural areas; the district is inadequately resourced in terms of dwindling Grants from government and low Internally Generated Funds(IGF) emanating from limited/undeveloped businesses and markets. Hence, the challenge in meeting the high and pressing demands on social infrastructure including other mandatory activities to ensure popular participation of citizens in planning, implementation and evaluation of programmes and projects.

The district as an agent of government decentralization is mandated to ensure adequate sensitization and popular participation of citizens in government policies for effective implementation, creating a sense of ownership to improve the livelihood of people within its jurisdiction, it is also mandated to work towards meeting sustainable development goals , as well as African Union's Agenda 2013-2063;

the National Development Planning System Act, 1994, (Act 480), and LI 2232 requires that every District Assembly to prepare AAPs , and report appropriately on its policies, Programmes and projects implemented , measuring and reporting on core national indicators through the annual progress report(There are about sixty-eight communities in the district. These include Lingbinshi, Tari, Singa, Disah, Kagbal, Lukula, Wawato, Bawena, Mankarigu and Daboya as the major localities





## DISTRICT OBJECTIVES IN LINE WITH THE LTNDP 2018-2021

These objectives are medium term objectives that have been developed in line with the Long Term National Development Plan (LTNDP) to be achieved over a period of four years. It is envisaged that, a successful implementation of the below projects, programs and activities will add to the overall increased level of achievement of the District vision.

Funding sources including the District Assembly Common Fund (DACF), the District Development Facility (DDF), Internally Generated Funds (IGF) and other Donors would be relied on to aid in the execution of the plan.

| GOALS   | ADOPTED POLICY OBJECTIVES  |
|---|--|
| <b>Build A Prosperous Economy</b>   | 2 Ensure improved skills development for the local industry(SDG Target 4.4)  |
|   | 3 1.1 Create an enabling agribusiness environment  |
|   | 3.1 Improve post-harvest management  |
|   | 3.2 Promote livestock and poultry development for food security and income generation  |
|   | 3.3 Diversify and expand the tourism industry for economic development   |
| <b>Create Opportunities for All</b>   | 3.4 Promote tourism  |
|   | 2.0 Enhance inclusive and equitable access to, and participation in quality education at all level                                   |
|   | 2.1 Promote inclusive education  |
|   | 2.2 Strengthen school management systems   |
|   | 2.3 Ensure affordable, equitable, accessible quality and Universal Health Coverage (UHC) for all                                     |
|   | 2.4 Reduce disability, morbidity, and mortality  |
| <b>Safeguard the Natural Environment and Ensure A Resilient Built Environment</b>   | 2.5 Improve maternal and adolescent reproductive health  |
|   | 2.6 Strengthen social protection for the vulnerable  |
|   | 3.1 Expand forest conservation areas Reduce Environmental Pollution  |
| <b>Maintain A Stable, United and Safe Country</b>   | 3.2 1.2 Protect forest reserves  |
|   | 3.3 Promote proactive planning for disaster prevention and mitigation  |
| <b>Mainstream Emergency Planning and Preparedness into Ghana's Development Planning Agenda at All Levels to Respond to Potential Internal and External Threats (Including Covid-19)</b> | 4.1 Deepen political and administrative decentralization   |
|   | 4.2 Improve participation of civil society in national development   |
| <b>Improve Delivery of Development Outcomes at All Levels</b>   | 5.0 Enhance surveillance system and build response capacity to prevent, detect, contain, and respond to a possible epidemic outbreak |
| <b>Improve Delivery of Development Outcomes at All Levels</b>   | 6.0 Strengthen monitoring and evaluation systems at all levels   |

## PLAN IMPLEMENTATION TOOLS

### MONITORING AND EVALUATION

This Composite Annual Action Plan is time bound and its successful implementation is strictly tied to an effective Monitoring and eventual Evaluation. Implementation is divided into four quarters in the year and therefore, proper monitoring is key to achieving the set objectives. Quarterly monitoring shall be carried out to ascertain among other thing;

- Project completion period
- Project specification
- Community participation and ownership
- Best practices and value for money

### REPORTING

Progress reports would be written quarterly to keep track and record of work. This will also ensure all-inclusiveness, accountability, keep project within budget and create an opportunity for reviews to be done. Key stakeholders shall be served with reports of implementation to get them abreast with implementation status.

**1.0 THEMATIC AREA: ECONOMIC DEVELOPMENT (BUILD AN INDUSTRIALISED, INCLUSIVE AND RESILIENT ECONOMY)**

Objectives: 1. Ensure improved fiscal performance and sustainability

**1.2 Focus Area : Local Economic Development**

| NO. | ACTIVITY  | LOCATION                                  | INDICATORS  |   |   |   |   | ANNUAL BUDGET |            | IMPLEMENTING AGENCIES |               | STATUS |
|-----|---|---|---|---|---|---|---|---------------|------------|-----------------------|---------------|--------|
|     |   |   |   | 1 | 2 | 3 | 4 | LOCAL         | EXTERNAL   | LEAD                  | COLLABORATING |        |
| 1   | Sensitize people in three(3) area councils on the need to pay tax | Daboya AC<br>Lingbinsi AC<br>Mankarigu AC | 3 Area Councils sensitized on the need for tax          |   |   |   |   |               |            |                       |               |        |
| 2   | Build the capacity of revenue collectors                          | Daboya AC<br>Lingbinsi AC<br>Mankarigu AC | Capacity of revenue collectors in 3 area councils built |   |   |   |   |               |            |                       |               |        |
| 3   | Form taskforce on revenue mobilization                            | Daboya AC<br>Lingbinsi AC<br>Mankarigu AC | Task Force formed and functional                        |   |   |   |   |               |            |                       |               |        |
| 4   | Construction of Market Stalsl in three communities                | Mankarigu<br>Lingbinsi                    | Pavement constructed                                    |   |   |   |   |               | 420,000.00 | DA                    | WD            | new    |

|            |  |                                     |  |                            |   |   |   |                      |          |                              |               |               |
|------------|--|-------------------------------------|--|----------------------------|---|---|---|----------------------|----------|------------------------------|---------------|---------------|
|            |  | Teri                                |  |                            |   |   |   |                      |          |                              |               |               |
| 5          | Productive Inclusion trainings                         | Lingbinsi, Singa, Mankarigu, Zeipe, | Trained on productive inclusion                                  |                            |   |   |   | 25,200.00            | GPSN P   | BAC                          | NEW           |               |
| 6          | Grant to Productive Inclusion beneficiaries            | Lingbinsi, Singa, Mankarigu, Zeipe, | Disburse grants to beneficiaries                                 |                            |   |   |   | 30,000.00            | GPSN P   | BAC                          | NEW           |               |
| <b>NO.</b> | <b>ACTIVITY</b>  | <b>LOCATION</b>                     | <b>INDICATORS</b>  | <b>TIME SCHEDULE (QTR)</b> |   |   |   | <b>ANNUAL BUDGET</b> |          | <b>IMPLEMENTING AGENCIES</b> |               | <b>STATUS</b> |
| 7          |  |                                     |  | 1                          | 2 | 3 | 4 | LOCAL                | EXTERNAL | LEAD                         | COLLABORATING |               |
| 8          | To organise intermediate skill training in Soap making | Donkompe, Yazori                    | Increase in productivity and technology adoption and improvement |                            |   |   |   |                      |          | B.A.C                        | DA            | New           |
| 9          | Intermediate Marketing and Customer Orientation        | Daboya                              | Increase in sales and profitability.                             |                            |   |   |   |                      |          | B.A.C                        | DA            | New           |
| 10         | NVTI Certification                                     | District wide                       | Increase the number of NVTI certificate holders                  |                            |   |   |   |                      |          | B.A.C                        | DA            | New           |

| 11  | Intermediate Skills Training in Soya beans processing   | Sakpege No. 1                          | Improve technology and increase in businesses                    |               |   |   |   |                       |          | B.A.C  | DA   | New           |
|-----|---|--|--|---------------|---|---|---|-----------------------|----------|--------|------|---------------|
| 12  | Organise MSE sub-committee meeting  | Daboya                                 | Strengthen the institutional capacity in MSE development         |               |   |   |   |                       |          | B.A.C  | DA   | New           |
| 14  | intermediate financial management and Sources of Business Finance including savings and banking culture | Daboya                                 |  |               |   |   |   |                       |          | B.A.C  | DA   | New           |
| 15  | Technology improvement and packaging training in Guinea Fowl Rearing                                    | Kupoto                                 | Increase in productivity and technology adoption and improvement |               |   |   |   |                       |          | B.A.C  | DA   | New           |
| 17  | To organise intermediate skills in groundnut processing   | Tidrope                                | Increase in productivity and product diversification             |               |   |   |   |                       |          | B.A.C  | DA   | New           |
| 18  | Facilitate clients access to the REDEF Fund   | District wide                          | Access to credit   |               |   |   |   |                       |          | B.A.C  | DA   | New           |
| NO. | ACTIVITY  | LOCATION                               | INDICATORS   | ANNUAL BUDGET |   |   |   | IMPLEMENTING AGENCIES |          | STATUS |      |               |
|     |   |  |  | 1             | 2 | 3 | 4 | LOCAL                 | EXTERNAL |        | LEAD | COLLABORATING |
| 20  | To mobilise Potential clients for training in poultry rearing at the Farm Institutes                    | Wenchi/Adidome/Asuansi farm Institutes | Increase in the number of jobs created for the Youth             |               |   |   |   |                       |          | B.A.C  | DA   | New           |
| 21  | Facilitate clients access to the MGF  | District wide                          | Access to credit   |               |   |   |   |                       |          | B.A.C  | DA   | New           |

|    |  |               |  |  |  |  |  |  |  |           |    |     |
|----|--|---------------|--|--|--|--|--|--|--|-----------|----|-----|
| 22 | Occupational Safety Health & Environmental Management (OSHEM)          | District wide | Increase in the level of technology adoption by master craft men |  |  |  |  |  |  | B.A.C     | DA | New |
| 24 | To organise intermediate skills training in shea butter value addition | Garima        | Increase in productivity, businesses and technology adoption     |  |  |  |  |  |  | GPSN<br>P | DA | New |

### 1.3 Focused Area; Agriculture and Environment

#### Objectives; -

1. Improve production efficiency and yield
2. Promote livestock and poultry development for food security and income generation

|   | ACTIVITY   | LOCATION                          | INDICATORS  |   |   |   |   | ANNUAL BUDGET |           | IMPLEMENTING AGENCIES |               | STATUS                    |          |
|---|--|-----------------------------------|---|---|---|---|---|---------------|-----------|-----------------------|---------------|---------------------------|----------|
|   |  |                                   |   | 1 | 2 | 3 | 4 | LOCAL         | EXTERNAL  | LEAD                  | COLLABORATING |                           |          |
| 1 | Organize District Farmers Day  | District wide                     | Farmers day organized                                 |   |   |   |   |               | 30,000.00 |                       | DA            | DAD                       | New      |
|   | Establish nurseries of assorted tree plants for afforestation and PERD | Lingbisi ,Daboya and Mnakarigu AC | 3No. nurseries established for afforestation programs |   |   |   |   |               |           |                       | DAD           | GPSNP, GIZ- REACH, AROCHA | On-going |
| 2 | Conduct disease surveillance in all the 3 Area councils                | District wide                     | disease surveillance organized in all 3 area councils | X | X | X | X |               | 4,360.00  |                       | DA            | DAD                       | On-going |

|   |  |                               |  |   |   |   |   |        |            |       |        |          |
|---|--|-------------------------------|--|---|---|---|---|--------|------------|-------|--------|----------|
| 3 | Organize and vaccinate 8,000 sheep and goats against PPR               | District wide                 | 8,000 sheep and goat vaccinated  | X | X |   |   |        | 2,356.00   | DA    | DAD    | On-going |
| 4 | Monthly meeting staff  | Daboya                        | Monthly staff meetings organized   | X | X | X | X | 50,000 | 5,000.00   | DA    | DAD    | On-going |
| 5 | Fuel Allowance for AEA's, Supervisors and other field work supervision | Daboya                        | AES's Supervision done   | X | X | X | X |        | 40,000.00  | MAG   | DAD    | New      |
| 6 | Organize rice farmers into production, processing and Marketing groups | District wide                 | Rice farmers organized into production, processing, and marketing groups | X | X |   |   |        | 80,640.00  | MAG   | DAD    | New      |
|   | Construction /rehabilitation of dams                                   | Lingbinsi<br>Sinsina<br>Singa | 3no. dams constructed  |   |   |   |   |        | 987,000.00 | GPSNP | DAD/DA |          |

1,3,1 Focused Area; Agriculture

|    | ACTIVITY   | LOCATION                                  | INDICATORS   |   |   |   |   | ANNUAL BUDGET |             | IMPLEMENTING AGENCIES |               | STATUS |
|----|--|---|--|---|---|---|---|---------------|-------------|-----------------------|---------------|--------|
|    |  |   |  | 1 | 2 | 3 | 4 | LOCAL         | EXTERNAL    | LEAD                  | COLLABORATING |        |
| 8  | Construction of 2no. Warehouse for storage of farm produce               | Lingbisi<br>Mankarigu                     | 1no. warehouse constructed                                     |   |   |   |   |               | 980,000.00- | DA                    | DAD           | New    |
| 10 | Community entry and Sensitization on Climate Change mitigating activates | Mankarigu,<br>Zeipe, Singa,<br>Lingbinsi, | Mankarigu, Zeipe,<br>Singa, Lingbinsi,                         |   |   |   |   |               | 6,600.00    | DA                    | MOFA          | New    |
| 11 | Establishing of cashew nursery site<br><br>(40, 000) seedlings           | Towrope<br>Gurbagu<br><br>Sisipe Daboya   | cashew nursery site<br><br>(50,000) seedlings each established |   |   |   |   |               | 500,000.00  | GPSNP                 | MOFA          | New    |
| 12 | Establishing 15 acres Cashew plantation farm                             | Sinsina Daboya<br>-Tidrope Guo & Kto      | 15 acres Cashew plantation farm established                    |   |   |   |   |               | 500,000.00  | GPSNP                 | MOFA          | New    |



|    |  |               |  |  |  |  |  |  |            |    |      |     |
|----|--|---------------|--|--|--|--|--|--|------------|----|------|-----|
| 13 | Planting for food and export Agriculture | District wide | Government Special Initiative on Agriculture<br>Carried out successfully |  |  |  |  |  | 200,000.00 | DA | MOFA | New |
|----|--|---------------|--|--|--|--|--|--|------------|----|------|-----|

### 1.3 Focus Area; Tourism and creative art development

Objectives: increase development of Tourism by 5% by 2021

|   | ACTIVITY   | LOCATION               | INDICATORS                                      |   |   |   |   | ANNUAL BUDGET |          | IMPLEMENTING AGENCIES |               | STATUS |
|---|--|------------------------|---|---|---|---|---|---------------|----------|-----------------------|---------------|--------|
|   |  |                        |   | 1 | 2 | 3 | 4 | LOCAL         | EXTERNAL | LEAD                  | COLLABORATING |        |
| 1 | .Sensitize three area councils on the importance of tourism    | Tourist sites marketed | People in 3 area councils sensitized on tourism |   |   |   |   | 20,000        | 30,000   | BAC                   | DPCU          |        |
| 3 | Putting up hospitality structures ton make sites user friendly | District wide          | Tourist site made functional                    |   |   |   |   | 50,000        | 100,000  | DA                    | DWD/<br>DPU   |        |
| 4 | Market tourist site through the media and festival             | Regional and National  | Tourist sites published in national magazines   |   |   |   |   | 5,000         |          | DA                    | BAC/DPCU      |        |

## 2.0 SOCIAL DEVELOPMENT

Goal: Create opportunities for all

.2.1 Focused Area: quality education for all

| N O. | ACTIVITY  | LOCATION            | INDICATORS                                       | TIME SCHEDULE (QTR) |   |   |   | ANNUAL BUDGET |            | IMPLEMENTING AGENCIES |               | STATU S  |
|------|---|---------------------|--|---------------------|---|---|---|---------------|------------|-----------------------|---------------|----------|
|      |   |                     |  | 1                   | 2 | 3 | 4 | LOCAL         | EXTERNAL   | LEAD                  | COLLABORATING |          |
| 1    | Completion of 1 no. 3 unit classroom block at Kuporto     | Kuporto             | 1no. 3 unit classroom block completed and in use |                     |   |   |   |               | 198,143.93 | DA                    | GES           | On-going |
| 2    | Completion of 1 no. 3 unit classroom block at Nabengu     | Nabengu             | 1no. 3 unit classroom block completed and in use |                     |   |   |   |               | 178,332.42 | DA                    | GES           | On-going |
| 3    | Completion of 1 No. 3-unit classroom Block with Ancillary | Presby JHS Linbinsi | 1no. 3 unit classroom block completed and in use |                     |   |   |   |               | 159,774.62 | DA                    | GES           | On-going |
| 4    | Completion of 1 no. 3 unit classroom block at Wawato      | Wawato              | 1no. 3 unit classroom block completed and in use |                     |   |   |   |               | 130,792.93 |                       | GES           | On-going |
|      |   |                     |  |                     |   |   |   |               |            |                       |               |          |

| N O. | ACTIVITY  | LOCATION  | INDICATORS  | TIME SCHEDULE (QTR) |   |   |   | ANNUAL BUDGET |            | IMPLEMENTING AGENCIES |               | STATUS   |
|------|---|---|---|---------------------|---|---|---|---------------|------------|-----------------------|---------------|----------|
|      |   |   |   | 1                   | 2 | 3 | 4 | LOCAL         | EXTERNAL   | LEAD                  | COLLABORATING |          |
| 5    | Construction of 2No. staff accomodation for teachers  | Daboya<br>Tari  | 2No. staff accommodation constructed  |                     |   |   |   |               | 304,409.63 | DA /DPAT              | GES           | On-going |
| 6    | Construction of 3unit classroom block Girls module with office store and ancillary facilities | Daboya  | 3unit classroom block Girls module with office store and ancillary facilities constructed |                     |   |   |   |               | 190,000.00 | DA                    | GES           | New      |
| 7    | Rehabilitation of 3no. 3-unit classroom block   | District wide   | 3no. 3-unit classroom block rehabilitated   |                     |   |   |   |               | 300,000.00 | DA                    | GES           | New      |
| N O. | ACTIVITY  | LOCATION  | INDICATORS  | TIME SCHEDULE (QTR) |   |   |   | ANNUAL BUDGET |            | IMPLEMENTING AGENCIES |               | STATUS   |
|      |   |   |   | 1                   | 2 | 3 | 4 | LOCAL         | EXTERNAL   | LEAD                  | COLLABORATING |          |
| 8    | Sponsor and bond 3 teacher trainees   | Daboya  | 3 teachers sponsored  |                     |   |   |   |               | 15,000.00  | DA                    | GES           | On-going |
| 9    | Organize Independence Day celebration   | Daboya, Lingbinshe, Mankaragu, Bawana and Bawena circuits | Independence Day Parade celebrated at all Circuit Centers                                 |                     |   |   |   |               | 30,000.00  | DA                    | GES           | New      |

|             |  |                 |   |                            |  |  |           |                      |    |                              |          |                |
|-------------|--|-----------------|---|----------------------------|--|--|-----------|----------------------|----|------------------------------|----------|----------------|
| 10          | STMI E   | Daboya          | STMI E organized  |                            |  |  |           | 10,000.00            | DA | GES                          | New      |                |
| 11          | Organize quarterly DEOC meetings   | Daboya          | Quarterly DEOC meetings organized                             |                            |  |  |           | 4,000.00             | DA | GES                          | on-going |                |
| 12          | Support to needy but brilliant students                                  | District wide   | Needy but brilliant students supported                        |                            |  |  |           | 20,000.00            | DA | GES, PLAN GHANA              | New      |                |
| 13          | Construction of 2no. 2 Bedroom semi Detached Teachers quarters at Daboya | Daboya<br>Sagya | 1no. bed room for DDE staff accommodation constructed         |                            |  |  |           | 300,000.00           | DA | GES                          | New      |                |
| 14          | Best Teacher Award   | Daboya          | Best teachers awarded   |                            |  |  | 00.00     | 10,000.00            | DA | GES                          | New      |                |
| 15          | Sponsor My First Day at School.  | District-wide   | My First Day at School organized                              |                            |  |  |           | 5,000.00             | DA | GES                          | On-going |                |
| 16          | Supervision and Monitoring of Free SHS Implementation                    | District-wide   | Supervision and monitoring conducted in schools district-wide |                            |  |  | 10,000.00 | 10,000.00            | DA | GES                          | NEW      |                |
|             |  |                 |   |                            |  |  |           |                      |    |                              |          |                |
| <b>N O.</b> | <b>ACTIVITY</b>  | <b>LOCATION</b> | <b>INDICATORS</b>   | <b>TIME SCHEDULE (QTR)</b> |  |  |           | <b>ANNUAL BUDGET</b> |    | <b>IMPLEMENTING AGENCIES</b> |          | <b>STATU S</b> |

|      |   |               |  | 1                   | 2 | 3 | 4 | LOCAL         | EXTERNAL | LEAD                  | COLLABORATING       |          |
|------|---|---------------|--|---------------------|---|---|---|---------------|----------|-----------------------|---------------------|----------|
| 17   | Procure furniture 2000 dual desk) to 20 deprived schools by 2022  | District wide | Furniture procured to 20 deprived schools  |                     |   |   |   |               |          | DA                    | GES                 | New      |
| 18   | Provide Free text books, exercise books and other TLM to all schools  | District wide | Teaching and learning materials provided   |                     |   |   |   |               |          | GES                   | DA & DONOR PARTNERS | New      |
| 19   | Build capacity of teachers at all schools   | District wide | Capacity of all teachers built   |                     |   |   |   |               |          | DA                    | GES                 | New      |
| N O. | ACTIVITY  | LOCATION      | INDICATORS   | TIME SCHEDULE (QTR) |   |   |   | ANNUAL BUDGET |          | IMPLEMENTING AGENCIES |                     | STATU S  |
|      |   |               |  | 1                   | 2 | 3 | 4 | LOCAL         | EXTERNAL | LEAD                  | COLLABORATING       |          |
| 20   | Formation and training of students clubs on personal hygiene, fire safety, environment, sanitation and climate change | District-wide | Students clubs on personal hygiene, fire safety, environment, sanitation and climate change formed and trained |                     |   |   |   |               |          | DA                    | GES                 | New      |
| 21   | Enrolment of pupils who are out of school in to the non-formal education  | District wide | Pupils enrolled into the formal education  |                     |   |   |   |               |          | Plan Ghana            | GES, DA             | On-going |

|    |   |                    |  |  |  |  |  |  |  |  |  |  |
|----|---|--------------------|--|--|--|--|--|--|--|--|--|--|
|    |   |                    |  |  |  |  |  |  |  |  |  |  |
| 22 | Provide free quality meals for pupils( school feeding ) | 3 selected schools | Free quality meals provided to 2 schools |  |  |  |  |  |  |  |  |  |

## 2.2 Focused Area; Health

### Objectives:

1. . Ensure affordable, equitable, easily accessible and Universal Health Coverage (UHC )
2. Strengthen health care management system
3. Enhance efficiency in governance and management of the system.
4. Reduce disability morbidity and mortality
5. Improve population management
6. Ensure food and nutrition security (FNS)
7. Ensure reduction of new HIV, AIDS/STIs and other infections, especially among vulnerable groups

| N O. | ACTIVITY   | LOCATIO N                            | INDICATORS                                  |   |   |   |   | ANNUAL BUDGET |            | IMPLEMENTING AGENCIES |                                   | STATUS   |
|------|--|--------------------------------------|---|---|---|---|---|---------------|------------|-----------------------|-----------------------------------|----------|
|      |  |                                      |   | 1 | 2 | 3 | 4 | LOCAL         | EXTERNAL   | LEAD                  | COLLABORATING                     |          |
| 1    | Completion and furnishing of 5 no. CHPs compounds in underserved areas of the district | Guo, Yagbon, Yazori, Kuporto, Lukula | 5 CHPS compound made functional             |   |   |   |   |               | 460,377.77 | DA                    | GHS, MoH, USAID System for Health | On-going |
|      | Construct a district hospital  | Daboya                               | District Hosp. Constructed                  |   |   |   |   |               | 900,000.00 | GOG/DA                | GHS                               | New      |
| 2    | Rehabilitation of 3 Health centers, CHPS Zones and 3 staff quarters                    | District wide                        | Health centers and CHPS zones rehabilitated |   |   |   |   |               | 200,000.00 | DA                    | GHS, MoH, USAID System for Health | New      |
| 3    | Organize HIV/AIDS activities (DRI)and MSHAP  | District wide                        | HIV/AIDS activities (DRI)Organized          |   |   |   |   |               | 30,000.00  | DA                    | DHD                               | New      |

| 4    | Organize National Immunization Day celebration(NID)  | District wide | National Immunization Day celebration(NID)Organized     |          |   |   |   | 5000.00       | 5,000.00   | DA                    | DHD                               | New    |
|------|--|---------------|---|----------|---|---|---|---------------|------------|-----------------------|-----------------------------------|--------|
| N O. | ACTIVITY   | LOCATIO N     | INDICATORS  | QUARTERS |   |   |   | ANNUAL BUDGET |            | IMPLEMENTING AGENCIES |                                   | STATUS |
|      |  |               |   | 1        | 2 | 3 | 4 | LOCAL         | EXTERNAL   | LEAD                  | COLLABORATING                     |        |
| 5    | Organize community durbars in each sub-district at least once every quarter to improve health care deliver | District wide | Community durbars organized in all sub-districts        |          |   |   |   |               | 22,000.00  | DHD                   | DA, MoH, System for Health,       | New    |
| 7    | Construction of 1no. 2 bedroom semi-detached nurses quarters at Daboya                                     | Daboya        | 1no. 2bedroom semi detached nurses quarters constructed |          |   |   |   |               | 300,000.00 | DA                    | DHD, MoH, USAID System for Health | New    |
| 8    | Community Performance Based Financing (cPBF)   | District wide | Number of facilities verified                           |          |   |   |   |               | 50,000.00  | DA                    | DHD, MoH, USAID System for Health | New    |
| 9    | Build capacities of 20 staffs on specialized areas   | Daboya        | Capacities of 10 staff built                            |          |   |   |   |               |            | DHD                   | DA, , USAID System for Health     | New    |
| N O. | ACTIVITY   | LOCATIO N     | INDICATORS  | QUARTERS |   |   |   | ANNUAL BUDGET |            | IMPLEMENTING AGENCIES |                                   | STATUS |
|      |  |               |   | 1        | 2 | 3 | 4 | LOCAL         | EXTERNAL   | LEAD                  | COLLABORATING                     |        |



| 10   | Train health Staff on NHIS Claims   | Daboya        | Health staffs trained on NHIS claims  |          |   |   |   | 5,0000.00     | 10,500.00 | DHD                   | DA, NHIA                    | New    |
|------|---|---------------|---|----------|---|---|---|---------------|-----------|-----------------------|-----------------------------|--------|
| 11   | Carry out Monitoring and Evaluation to all health facilities on financial management practices    | District wide | Monitoring and evaluation to all health facilities on financial carried out |          |   |   |   | 70000         | 11000.00  | DHD                   | DA, MoH, System for Health, | New    |
| N O. | ACTIVITY  | LOCATIO N     | INDICATORS  | QUARTERS |   |   |   | ANNUAL BUDGET |           | IMPLEMENTING AGENCIES |                             | STATUS |
|      |   |               |   | 1        | 2 | 3 | 4 | LOCAL         | EXTERNAL  | LEAD                  | COLLABORATING               |        |
| 12   | Conduct a refresher orientation to community volunteers on maternal health issues in the district | Daboya        | Community health volunteers orientated on maternal health issues            |          |   |   |   |               | 5000.00   | DHD                   | DA, System for Health,      | New    |
| 13   | Undertake the celebration of family planning week   | Daboya        | Celebration of family planning week held                                    |          |   |   |   |               | 17,890.00 | DHD                   | DA, MoH, System for Health, | New    |
| 14   | train relevant staff in the DHIMS 2 software data entry processes                                 | Daboya        | Capacity of relevant staff built on DHIMS 2 software data entry process     |          |   |   |   | 35,000.00     | 15,500.00 | DHD                   | DA, MoH, System for Health, | New    |
| 15   | Establish laboratory services   | Daboya        | Laboratory service established in Daboya                                    |          |   |   |   |               | 10,240.00 | DHD                   | DA, MoH, System for Health, | New    |

| 16   | Carry out outreach activities on mental health   |                  | Public fora organized on mental health education                  |          |   |   |   |               | 5290.00   | DHD                   | DA, MoH, System for Health, | New      |
|------|--|------------------|---|----------|---|---|---|---------------|-----------|-----------------------|-----------------------------|----------|
| N O. | ACTIVITY   | LOCATIO N        | INDICATORS  | QUARTERS |   |   |   | ANNUAL BUDGET |           | IMPLEMENTING AGENCIES |                             | STATUS   |
|      |  |                  |   | 1        | 2 | 3 | 4 | LOCAL         | EXTERNAL  | LEAD                  | COLLABORATING               |          |
| 17   | Disseminate mental health standard protocols and other Documents   | District wide    | Mental health standard protocols and other documents disseminated |          |   |   |   | 2,420.00      | 2,420.00  | DHD                   | DA, MoH, System for Health, | New      |
| 18   | Provide micro-nutrient supplement to pregnant women and organize community sensitization durbars for the leaders and mothers on the need to take the supplements | All health zones | Micronutrient supplement provided to pregnant women               |          |   |   |   | 6000.00       | 13,000.00 | DHD                   | DA, MoH, System for Health, | New      |
| 19   | Form mother to mother support groups   |                  | Mother to mother support groups formed                            |          |   |   |   | 8630.00       | 12,900.00 | DHD                   | DA, MoH, System for Health, | On-going |
| 20   | Provide Vitamin 'A' supplementation  | District wide    | Micronutrient supplement provided to pregnant women               |          |   |   |   | 2000          | 85,000.00 | DHD                   | DA, MoH, System for Health, | New      |
| N O. | ACTIVITY   | LOCATIO N        | INDICATORS  | QUARTERS |   |   |   | ANNUAL BUDGET |           | IMPLEMENTING AGENCIES |                             | STATUS   |
|      |  |                  |   | 1        | 2 | 3 | 4 | LOCAL         | EXTERNAL  | LEAD                  | COLLABORATING               |          |

|    |  |                   |   |  |  |           |           |     |                             |          |
|----|--|-------------------|---|--|--|-----------|-----------|-----|-----------------------------|----------|
| 21 | Train CBSVs  | District wide     | CBSVs trained   |  |  |           | 4,900.00  | DHD | DA, MoH, System for Health, | On-going |
| 22 | Provide equipment for neonatal resuscitation   | Daboya            | Maternal and child health services improved   |  |  |           | 28,000.00 | DHD | DA, MoH, System for Health, | New      |
| 23 | Train health workers on the use of job aid & monitoring equipment. (BP Apparatus, etc) | Daboya            | Health workers trained on the use of job aid and monitoring equipment               |  |  |           | 14,170.00 | DHD | DA, MoH, System for Health, | New      |
| 24 | Improve communicable disease surveillance system                                       | District wide     | Capacity of health staffs built on the surveillance system on communicable diseases |  |  |           | 5,230.00  | DHD | DA, MoH, System for Health, | New      |
| 25 | Train CBSVs on surveillance  | Daboya            | CBSVs trained on surveillance   |  |  |           |           | DHD | DA, MoH, System for Health, | New      |
| 26 | Strengthen emergency preparedness and responses  | Daboya            | Emergency preparedness and responses strengthen                                     |  |  | 11,251.00 | 35,000.00 | DHD | DA, MoH, System for Health, | New      |
| 27 | Procure 3 motor bikes for health staff   | All area councils | Number of motor bikes procured  |  |  | 60,000.00 |           | DHD | DA                          |          |

## 2.3 Focused Area; Welfare and Child Rights

### Objectives

1. : 1. Ensure the rights and entitlements of children
2. Ensure effective child protection and family welfare system
3. Promote economic empowerment of women

| N O. | ACTIVITY   | LOCATIO N                                 | INDICATORS   | QUARTERS |   |   |   | ANNUAL BUDGET |           | IMPLEMENTING AGENCIES |                | STATUS |
|------|--|---|--|----------|---|---|---|---------------|-----------|-----------------------|----------------|--------|
|      |  |   |  | 1        | 2 | 3 | 4 | LOCAL         | EXTERNAL  | LEAD                  | COLLABORATI NG |        |
| 1    | provide logistics for community mobilization for policy implementation                         | Lingbinsi AC<br>Daboya AC<br>Mankarigu AC | Logistics provided   |          |   |   |   |               | 10,000.00 | SW/CD                 | DA             | New    |
| 2    | Capacity building of staff in relevant areas   | Daboya                                    | 4 Staff capacity built   |          |   |   |   |               | 3,000.00  | SW/CD                 | DA             | New    |
| 3    | Organize Sensitization of communities on child Rights ,protection and domestic violence issues | Lingbinsi AC<br>Daboya AC                 | 12communities sensitized on child rights and protection<br>12communities sensitized on |          |   |   |   |               | 2,000.00  | SW/CD                 | DA             | New    |

|   |   |   |  |  |  |  |  |          |       |                   |
|---|---|---|--|--|--|--|--|----------|-------|-------------------|
|   |   | Mankarigu AC                                    | domestic violence issues                   |  |  |  |  |          |       |                   |
| 4 | increase coverage of LEAP communities by 10   | District wide                                   | LEAP communities increased by 10           |  |  |  |  | 2,000.00 |       | NEW               |
|   | Update records on LEAP beneficiaries and PWDs   | District wide                                   | Records on LEAP/PWDs beneficiaries updated |  |  |  |  | 2,000.00 |       | NEW               |
| 5 | Mainstream gender issues in most activities (women empowerment)   | 20 communities                                  |  |  |  |  |  | 3,0000   | 20000 | GPSNP<br>ON-GOING |
| 6 | Formation and Training of VSLA groups   | Lingbinsi, Singa, Mankarigu, Zeipe,             | 20 VSLA groups formed                      |  |  |  |  | 5,576.50 | DA    | CD&SW<br>NEW      |
| 7 | Community mobilization and sensitization on projects and programmes( policies ) illegal logging ,bush fire , flooding, Climate change and environmental issues etc) | Mankarigu , Lingbinsi, and Daboya Area Councils | 10 communities sensitized                  |  |  |  |  | 10,000   | CD/SW | DAD/NADMO<br>NEW  |
|   |   |   |  |  |  |  |  |          |       |                   |

### 3.0: ENVIRONMENT, INFRASTRUCTURE AND HUMAN SETTLEMENTS

Goal: Safeguard the natural environment and ensure a resilient built environment

#### 3.1 Focused Area; Roads , Electricity and water

| NO. | ACTIVITY   | LOCATION          | INDICATORS                                    |   |   |   |   | ANNUAL BUDGET |            | IMPLEMENTING AGENCIES |               | STATUS   |
|-----|--|-------------------|---|---|---|---|---|---------------|------------|-----------------------|---------------|----------|
|     |  |                   |   | 1 | 2 | 3 | 4 | LOCAL         | EXTERNAL   | LEAD                  | COLLABORATING |          |
| 1   | Spot improvement of Yagbon-Zeipe feeder road             | Yagbon-Zeipe      | Yagbon-Zeipe feeder road improved             |   |   |   |   |               | 79,795.00  | WD/DPCU               | DA            | On-going |
| 2   | Spot improvement of Gua- Kofrom feeder road              | Gua - kofrom      | Mankarigu - Bugsa feeder road improved        |   |   |   |   |               | 190,000.00 | WD/DPCU               | DA            | On-going |
| 3   | Spot improvement of 3.5km Mankarigu-Sakpala road         | Mankarigu-Sakpala | Mankarigu-Sakpala feeder road improved        |   |   |   |   |               | 260,000.00 | DA                    | GPSNP         | New      |
| 4   | Spot improvement of 2.8km Zeipe-Kikayili road            | Zeipe-Kikayili    | Zeipe-Kikayili feeder road improved           |   |   |   |   |               | 233,946.98 | DA                    | GPSNP         | New      |
| 5   | Connect 10 No communities to national grid               | District wide     | 5 communities connected to the nation grid    |   |   |   |   |               |            | VRA                   | DA            | New      |
| 6   | Construction of 1no. 20 units staff accommodation        | Daboya            | 1no. 20 units staff accommodation constructed |   |   |   |   |               | 497,000.00 | DA                    | DP/WD         | New      |
| 7   | Supervision and regulation of infrastructure development |                   |   |   |   |   |   | 13,900.00     | 30,000.00  | DA                    | DP/WD         | New      |

|   |  |                                   |   |  |  |  |  |  |    |     |     |
|---|--|-----------------------------------|---|--|--|--|--|--|----|-----|-----|
| 8 | Continuation of Presidential special initiative on small town solar powered water system | Tari<br>Yazori<br>Singa<br>Kagbal | Presidential special initiative on small town solar powered water system in 4 communities constructed |  |  |  |  |  | WD | GSI | New |
|---|--|-----------------------------------|---|--|--|--|--|--|----|-----|-----|

### 3.2 Focused Area: Climate Variability and Change

|   |  |   |  |   |   |   |   |  |           |        |                             |
|---|--|---|--|---|---|---|---|--|-----------|--------|-----------------------------|
| 1 | Formation of a multi-stakeholder association to enforce the environmental Bye-laws | District wide                               | Multi-stakeholder association formed and effective |   |   |   |   |  |           | EHU/CD | DONOR PARTNER S (AROC H A ) |
| 2 | Sensitize communities along river bodies on activities that pollute s water bodies | Daboya ,<br>Lingbisi &<br>Mankarigu<br>A/Cs | Thirty(30) communities sensitized                  |   |   |   |   |  | 30,000.00 | DA     | DAD                         |
| 3 | Sensitization of people around forest reserves on sustainable forest uses          | Selected communities                        | 25 communities sensitized                          | X | X | X | X |  | 4,360.00  | DA     | DAD                         |
| 4 | Provide sustainable livelihood mechanisms for people around forest areas           | Selected Communities                        | Reduce natural forest exploitation by 10%          | X | X | X | X |  | 2,356.00  | DA     | DAD                         |

|   |  |                      |   |   |   |   |   |  |           |    |     |
|---|--|----------------------|---|---|---|---|---|--|-----------|----|-----|
| 5 | Sensitize and encourage tree planting on degraded lands  | Selected communities | 100 Hectares of degraded land planted with exotic species | X | X | X | X |  | 2,640.00  | DA | DAD |
| 6 | Establish nurseries in each area council on cassia for fuel wood and cashew                              | Selected communities | Six(6) nurseries established                              | X | X | X | X |  | 40,000.00 | DA | DAD |
| 7 | Establish experimental plantations in the three Area Councils on cassia and other species for fuel wood. |                      | Sixty(60) acres of plantations established                | X | X | X | X |  | 60,000.00 | DA | DAD |



### 3.3 Disaster prevention and management

| N O. | ACTIVITY   | LOCATIO N             | INDICATORS  | QUARTERS |   |   |   | ANNUAL BUDGET |           | IMPLEMENTING AGENCIES |                | STATUS |
|------|--|-----------------------|---|----------|---|---|---|---------------|-----------|-----------------------|----------------|--------|
|      |  |                       |   | 1        | 2 | 3 | 4 | LOCAL         | EXTERNAL  | LEAD                  | COLLABORATIN G |        |
| 1    | Formation and training of disaster volunteers (DVGS) in disaster prone communities                       | District wide         | disaster volunteers (DVGS) fomed and trained                              |          |   |   |   |               | 2,500.00  | NADMO                 | FS             |        |
| 2    | Education of Assembly members on afforestation and monitoring of tree planting exercise in the District. | 23 members            | Assembly members trained on afforestation and monitoring of tree planting |          |   |   |   |               | 2,500.00  | NADMO                 | FC             |        |
| 3    | Procure relief items to support flood and fire victims   |                       | Relief item   |          |   |   |   |               | 50,000.00 | NADMO                 | FS             |        |
| 4    | Organize a workshop on flood early worning signs for communities along the White Volta                   | Selected communiti es | 30 community reps. Trained on flood Early warning signs                   |          |   |   |   |               | 7,000.00  | NADMO                 | DAD            |        |
| 5    | Prepare a disaster preparedness plan for the district  |                       | A disaster preparedness plan prepared                                     |          |   |   |   |               | 4,000.00  | NADMO                 | DAD            |        |
| 6    | Formation of a district disaster preparedness team   | District wide         | Disaster preparedness team formed   |          |   |   |   |               | 2,000.00  | NADMO                 | CA             |        |

### 3.4 Human Settlements Development and Housing

#### 1. Promote sustainable, spatially integrated and orderly development of human settlements

| N O. | ACTIVITY   | LOCATIO N                                 | INDICATORS  | QUARTERS |   |   |   | ANNUAL BUDGET |          | IMPLEMENTING AGENCIES |                | STATUS |
|------|--|---|---|----------|---|---|---|---------------|----------|-----------------------|----------------|--------|
|      |  |   |   | 1        | 2 | 3 | 4 | LOCAL         | EXTERNAL | LEAD                  | COLLABORATIN G |        |
| 1    | preparation of Spatial Development Frameworks, Structure Plans and Local Plans for MMDAs | District wide                             | Spatial Development Frameworks, Structure Plans and Local Plans for the district prepared |          |   |   |   | 140,000.00    | 100,000  | PPD                   | DWD/DPU        | NEW    |
| 2    | Undertake regular monitoring of spatial planning and management                          | DISTRICT WIDE                             | Monitoring Reports on spatial plans   |          |   |   |   | 100,000.00    |          | PPD                   | DWD/DPU        | NEW    |
| 3    | Undertake regular public planning education  | Daboya AC<br>Mankarigu AC<br>Lingbinsi AC | Number of communities sensitized on special planning                                      |          |   |   |   | 20000.00      |          | PPD                   | DWD/DPU        | NEW    |
| 4    | Under take street naming and property addressing of major communities                    | Daboya<br>Mankarigu<br>Lingbinsi          |   |          |   |   |   |               |          | PPD                   | DWD/DPU        | NEW    |
|      |  |   |   |          |   |   |   |               |          |                       |                |        |

#### 4. GOVERNANCE CORRUPTION AND ACCOUNTABILITY

**Goal: Maintain A Stable, United and Safe Country**

**Strength the decentralized sub-structures authorities in development and governance processes**

| Activities  | Location                      | Indicators  | Timeline) |    |    |    | Cost      |     |  | Implementing Institutions |      | Status   |
|---|-------------------------------|---|-----------|----|----|----|-----------|-----|--|---------------------------|------|----------|
|   |                               |   | Q1        | Q2 | Q3 | Q4 | GOG       | IGF |  |                           |      |          |
| Provide adequate logistics for the ACs  | All Area Councils             | Logistics for ACs provided                        |           |    |    |    | 60,000    |     |  | DA                        | DPCU | NEW      |
| Provide logistics for the preparation of : AAP; FFR APR; QPR and public hearings on them.               | All Area Councils :<br>Daboya | Logistics for AAP,FFR , CBH,APR,and QPRs provided |           |    |    |    | 120.000   |     |  | DA                        | PU   | ON-GOING |
| Build the capacities of AC executive on revenue collection; data collection; and community mobilization | All Area Councils             | AC executive trained .                            |           |    |    |    | 10,000.00 |     |  |                           |      | New      |
| Organize quarterly meetings with ACs  | Mankarigu                     | 4no. DPCU Minutes                                 |           |    |    |    |           |     |  |                           |      | On-going |

|   |   |   |  |  |  |  |            |  |  |  |  |          |
|---|---|---|--|--|--|--|------------|--|--|--|--|----------|
| Organize Public hearings at ACs and Electoral   |   |   |  |  |  |  | 120,000.00 |  |  |  |  |          |
| Provide 1no. office and 2no. residential accommodation for staff of decentralized departments | Daboya  | 1no office accommodation and<br>2no. staff accommodation provided |  |  |  |  | 200,000.00 |  |  |  |  | New      |
| Provide logistics for regional and national meetings with                                     | All Area Councils :<br>Daboya<br>Lingbinsi              | NUMBER OF Logistics provided for regional and national meetings   |  |  |  |  | 40,000     |  |  |  |  | Ongoing  |
| Organize meetings with traditional authorities on issues of conflict resolution               | Mankarigu   | Number of Disec/Resec meetings HELD                               |  |  |  |  | 100,000.00 |  |  |  |  | On-going |
| Build capacity of women on issues of Gender Equality  | All Area Councils :<br>Daboya<br>Lingbinsi<br>Mankarigu | Number of women trained on Gender equality                        |  |  |  |  | 6000       |  |  |  |  | On-going |
| Construct police posts in Bawena , and Tari   | All Area Councils :<br>Daboy<br>Lingbinsi               | Number of police post constructed                                 |  |  |  |  | 600,000    |  |  |  |  | On-going |

|  |  |   |  |  |  |  |  |            |  |  |  |          |
|--|--|---|--|--|--|--|--|------------|--|--|--|----------|
|  |  | Mankarigu   |  |  |  |  |  |            |  |  |  |          |
|  | Provide logistical support to all security agencies on conflict resolution | All Area Councils :<br>Daboya<br>Lingbinsi<br>Mankarigu | Number of logistical support provided to security Agencies |  |  |  |  | 150,000    |  |  |  | On-going |
|  | Provide mechanized boreholes for 8 health facilities                       | All Area Councils<br>Daboya                             | Number of mechanized boreholes provided                    |  |  |  |  | 300,000    |  |  |  | On-going |
|  |  | Lingbinsi<br>Mankarigu                                  |  |  |  |  |  | 500,000.00 |  |  |  | New      |

## 5.0 EMERGENCY PREPAREDNESS AND RECOVERY (INCLUDING COVID- 19)

**Goal: mainstream Emergency Planning and Preparedness into Ghana's Development Planning Agenda at All Levels to Respond to Potential Internal and External Threats (Including Covid-19)**

| Activities  | Location   | indicator                                      | Timelines<br>(Year 1-4) |    |    |    | Cost       |       | Implementing Institutions |               | Status |
|---|--|--|-------------------------|----|----|----|------------|-------|---------------------------|---------------|--------|
|   |  |  | Q1                      | Q2 | Q3 | Q4 | GOG        | IGF   | LEAD                      | COLLABORATING |        |
| Organize sensitization in all communities on Covid -19 on the observance of the protocols | All communities  | 3 ACs sensitized on covid 19                   |                         |    |    |    | 400,000    | 10000 | GHS                       | EHD/CD-SW     | NEW    |
| Provide PPEs to all communities   | All communities  | All communities provided with PPEs             |                         |    |    |    | 400,000.00 | 10000 | GHS                       | EHD/CD-SW     | NEW    |
| Build capacities of 60 health professionals on Covid 19                                   | Daboya   | 60 health personnel capacity built on covid 19 |                         |    |    |    | 40,000     |       | GHS                       | EHD/CD-SW     | NEW    |
|   | All Area Councils:<br>Daboya<br>Lingbinsi<br>Mankarigu |  |                         |    |    |    |            |       | GHS                       | EHD/CD-SW     | NEW    |

## 6.0 IMPLEMENTATION, COORDINATION, MONITORING AND EVALUATION

Goal : improve delivery in development outcomes at all levels

| 1 | Activities   | Location      | Indicator               | Timelines<br>(Year 1-4) |    |    |    | Cost   |     |  | Implementing Institutions |               | Status   |
|---|--|---------------|-------------------------|-------------------------|----|----|----|--------|-----|--|---------------------------|---------------|----------|
|   |  |               |                         | Q1                      | Q2 | Q3 | Q4 | GOG    | IGF |  | LEAD                      | COLLABORATING |          |
| 3 | Preparation and implementation of AAP  | District wide | AAP document            |                         |    |    |    | 60,000 |     |  | DA                        | DPCU          | ONGOING  |
| 4 | Organizing quarterly DPCU meetings   |               | 4 DPCU Minutes prepared |                         |    |    |    | 24,000 |     |  | DA                        | DPCU          | ON-GONIG |
| 6 | Implementation of the revenue mobilization and implementation plan                     |               | Document on RMP         |                         |    |    |    | 50,000 |     |  | DA                        | DPCU          | NEW      |
| 7 | Undertake monitoring of all projects and programmes annually<br><br>Preparation of APR |               | APR Report for 2022     |                         |    |    |    | 10,000 |     |  | DA                        | DPCU          | NEW      |

|   |   |  |                                    |  |  |  |  |        |        |  |    |      |          |
|---|---|--|------------------------------------|--|--|--|--|--------|--------|--|----|------|----------|
| 8 | Organize quarterly monitoring and preparation of QPRs |  | 4 QPRs reports prepared            |  |  |  |  | 5,000  | 10,000 |  | DA | DPCU | ON GOING |
| 9 | Organize Two (2) Public hearings each on MTDP and AAP |  | Reports on public Hearings on MTDP |  |  |  |  | 12,000 | 10,000 |  | DA | DPCU | ON-GOING |





## **APPENDIX**

### **SUSTAINABILITY AND ENVIRONMENTAL IMPACT ANALYSIS ()**

These projects will impact on the natural resources, socio- cultural, Economic and Institutional environment during and after project implementation. These include issues on gender, conflict and HIV and Aids.

The projects and the issues are therefore subjected to compatibility and sustainability test as shown in Appendix C. The results are as follows;

#### **1. Construction of Classroom Blocks**

##### **❖ Gender**

- Reduce teenage pregnancy
- Increase girl child enrolment, retention and transition rates among girls
- Reduce maternal and infant mortalities
- Reduce widowhood inheritance

As shown in appendix A 1&2

##### **❖ Natural Environment and Sanitation**

- Increase sand winning and chain- saw operation for construction
- Felling of trees and erosion around the site
- Project will provide sanitation facilities which will help reduce indiscriminate defecation

A shown in appendix C 1&2

##### **❖ Economic Environment**

- Project will promote technology transfer as local artisans are employed and blend with outsiders
- It will also provide jobs in the dry season as projects are implemented at this time

##### **❖ Institutional Environment**

- Project will increase community participation through site meetings
- Departments, agencies and Town/Area Councils will also be part of monitoring and evaluation of the project

#### **2. Construction of Health Facilities**

##### **❖ Gender**

- Reduce teenage pregnancy through public education
- Reduce maternal and infant mortalities as the hospital can now handling complicated cases
- Reduce OPD attendance through better health service delivery

As shown in appendix A1&2

❖ **Natural Environment and Sanitation**

- Increase sand winning and chain- saw operation for construction
- Felling of trees and erosion around the site
- Project will provide sanitation facilities which will help reduce indiscriminate defecation

A shown in appendix A 1&2

❖ **Economic Environment**

- Project will promote technology transfer as local artisans are employed and blend with outsiders
- It will also provide jobs in the dry season as projects are implemented at this time
- Increase incomes through increased working time as people have become healthier.

❖ **Institutional Environment**

- Project will increase community participation through site meetings
- Departments, agencies and Town/Area Councils will also be part of monitoring and evaluation of the projects
- Increase health service delivery in the district will attract qualify personnel to accept postings to the district.
- Reduce child and maternal mortality

### **3. Construction of dams and Dug-Outs**

❖ **Gender**

- Increase household nutrition through Green and Leafy Vegetable production
- Reduce unemployment among the youth through Dry season farming.
- Increase livestock production by providing water throughout the season

As shown in appendix A1&2

❖ **Natural Environment and Sanitation**

- Increase chain- saw operation for construction
- Felling of trees and erosion around the site
- Planting of trees along catchment areas
- Project will provide sanitation facilities which will help reduce indiscriminate defecation

A shown in appendix A 1&2

❖ **Economic Environment**

- Project will promote technology transfer as local artisans are employed and blend with outsiders

- It will also provide jobs in the dry season as projects are implemented at this time
- Increase incomes through increased working time as people have become healthier.

❖ **Institutional Environment**

- Project will increase community participation through site meetings
- Departments, agencies and Town/Area Councils will also be part of monitoring and evaluation of the projects
- Increase Agricultural service delivery and irrigation in the district will attract qualify personnel to accept postings to the district.

**Mitigating Measures of Negative Impact of the Interventions**

| No. | Intervention                             | Impact  | Mitigating Measures  |
|-----|--|---|--|
| 1.  | <b>Construction of Classroom Block</b>   | Land degradation  | Tree planting at the site<br>Landscaping<br>Awareness creation<br>Levy contractors to reclaim degraded lands |
|     |  | High illiteracy and ignorance affecting enrolment                             | Intensify girl- child education  |
|     |  | Negative cultural practices such as widowhood inheritance and fused marriages | Intensify public education.<br>Institute child right panels  |
| 2.  | <b>Construction of Health Facilities</b> | Land degradation  | Tree planting at the site<br>Landscaping<br>Awareness creation   |

|          |  |                                       |   |
|----------|--|---------------------------------------|---|
|          |  |                                       | Levy contractors to reclaim degraded lands  |
|          |  | Land disputes                         | Land compensation<br>Proper documentation on acquired land  |
| <b>3</b> | <b>Construction of Dams and Dug-outs</b> | Land degradation                      | Reclamation of degraded land<br>Sensitization on open defecation<br>Tree planting along catchment areas<br>Prevent farming along catchment areas. |
|          |  | Land disputes                         | Proper acquisition of land .<br>Land compensation   |
|          |  | Open defecation along catchment areas | Ensure communities attain ODF.<br>Continuous monitoring on CLTS activities.   |

Appendix A1

Compound Matrix for Analysis of PPPs against Major-Environment Concerns

| Major Environmental Concerns                              | Natural Resources |         |                                 |                           |              |                                 | Socio-cultural issues |                       |                                 |  |                      |                         |                       |                                     |                  |               | Economic Issues |                            |                              | Institutional                                   |                             |                      |                          |  |  |
|---|-------------------|---------|---------------------------------|---------------------------|--------------|---------------------------------|-----------------------|-----------------------|---------------------------------|--|----------------------|-------------------------|-----------------------|-------------------------------------|------------------|---------------|-----------------|----------------------------|------------------------------|---|-----------------------------|----------------------|--------------------------|--|--|
|   | Wind storms       | Erosion | Indiscriminate felling of trees | Indiscriminate defecation | Sand winning | Bush fires and charcoal burning | Teenage pregnancy     | Widowhood inheritance | High drop- out rate among girls | Low retention and transition rate esp. girls | High illiteracy rate | High maternal mortality | High infant mortality | High OPD attendance esp. on malaria | Faused marriages | Land disputes | Low incomes     | High seasonal unemployment | Poor economic infrastructure | Low capacities of local artisans and businesses | Low community participation | Chieftaincy conflict | Low revenue regeneration | Inadequate capacity of depts. and agencies | Non- operation of the DA sub- structures |
| Policies/Plans/programmes/ Activities<br>Dev' t Issues    |                   |         |                                 |                           |              |                                 |                       |                       |                                 |  |                      |                         |                       |                                     |                  |               |                 |                            |                              |   |                             |                      |                          |  |  |
| Construction of Classroom blocks, ancillary and furniture | -                 | -       | -                               | +                         | -            | +                               | +                     | +                     | +                               | +  | +                    | +                       | +                     | +                                   | +                | -             | +               | +                          | 0                            | +   | +                           | +                    | +                        | +  | +  |
| Construction of CHPS Compounds                            | -                 | -       | -                               | +                         | -            | +                               | +                     | +                     | +                               | +  | +                    | +                       | +                     | +                                   | +                | -             | +               | +                          | 0                            | +   | +                           | +                    | +                        | +  | +  |
| Construction of Dams                                      | 0                 | +       | -                               | 0                         | +            | 0                               | 0                     | 0                     | 0                               | 0  | 0                    | 0                       | 0                     | 0                                   | +                | -             | +               | 0                          | 0                            | 0   | 0                           | 0                    | 0                        | 0  | 0  |
| Construction of Roads                                     | -                 | +       | -                               | -                         | +            | 0                               | 0                     | 0                     | 0                               | 0  | 0                    | 0                       | 0                     | -                                   | +                | -             | +               | -                          | 0                            | 0   | 0                           | 0                    | 0                        | 0  | 0  |

Scale: Negative effect - Positive effect + Neutral effect 0

**COMPOUND MATRIX:- RECORD SHEET**

**No. 1**

**Description of Activity under review: Construction of Classroom blocks**

| <b>NATURAL RESOURCES</b>                | <b>REASONS</b>  | <b>SCORE</b> |
|---|---|--------------|
| Bush fires & Charcoal burning           | Good education will stop hunting and charcoal burning   | +            |
| Erosion                                 | Erosion around the site will affect the structure   | -            |
| Indiscriminate felling of trees         | Chain saw operators for construction purposes<br>Felling of trees around the site to pave away for construction                   | -            |
| Indiscriminate defecation               | Sanitation facilities of the project will prevent indiscriminate defecation and instill good sanitation practices among the youth | +            |
| Wind storm                              | Wind storm may affect the structures as the environment is left bare without trees  | -            |
| Sand winning                            | Sand winning for the construction will degrade the land   | -            |
| <b>SOCIO-CULTURAL</b>                   |   |              |
| Teenage pregnancy                       | Improved education will reduce teenage pregnancy  | +            |
| Widowhood inheritance                   | Improved education will eliminate the practice of widowhood inheritance   | +            |
| High drop- out rate among girls         | Improved school infrastructure will reduce drop- out rate   | +            |
| Low enrolment and retention among girls | Improved school infrastructure will increase enrolment and retention rates  | +            |
| High illiteracy rate and ignorance      | High illiteracy rate and ignorance will affect the use of the structure   | -            |
| High Maternal Mortality                 | Improved education can reduce maternal mortality as people become more enlightened and seek proper medical care                   | +            |

|   |  |   |
|---|--|---|
| High Infant Mortality                           | Improved education can reduce infant mortality as people become more enlightened and seek proper medical care  | + |
| High OPD attendance esp. on malaria             | Improved education can reduce OPD attendance as people become enlightened and practice good health, environmental and hygiene.   | + |
| Fause marriages                                 | Improved education will reduce faused marriages  | + |
| Land disputes                                   | Availability of land for construction may affect other uses such as farming  | - |
| <b>ECONOMIC ISSUES</b>                          |  |   |
| Low incomes                                     | Improved education will increase people ability to earn decent wages and salaries which increase their incomes<br><br>The people can also be engage in the construction work to increase their incomes | + |
| High seasonal unemployment                      | The people can be employed in the construction works<br><br>Improved education will increase people ability to acquire all year round employment   | + |
| Poor economic infrastructure                    | Economic infrastructure is not dependent on education  | 0 |
| Low capacities of local Artisans and businesses | The artisans can be engaged in the construction works that will enhance technology transfer<br><br>The purchase of materials locally can also improve businesses                                       | + |
| <b>INSTITUTIONAL</b>                            |  |   |
| Low community participation in dev't            | Involvement of communities in planning and implementation of the projects will increase their participation in development   | + |
| Chieftaincy conflicts                           | Improved education will reduce chieftaincy disputes  | + |
| Low revenue generation                          | Project implementation will increase DA revenue  | + |
| Inadequate capacities of agencies and depts.    | Involvement of depts. and agencies in project planning and implementation will increase their capacities   | + |
| Non- operation of DA Sub-structures             | Involvement of Town/Area Councils and Unit committees in project planning and implementation will enhance their capacities to function.  | + |

**COMPOUND MATRIX:- RECORD SHEET**

**No. 2**

**Description of Activity under review: Construction of Health Facilities**

| NATURAL RESOURCES | REASONS | SCORE |
|-------------------|---------|-------|
|-------------------|---------|-------|



|   |  |   |
|---|--|---|
| Bush fires & Charcoal burning           | Improved health cannot influence bush fires and charcoal burning directly  | 0 |
| Illegal logging                         | Improved health cannot influence bush fires and charcoal burning directly  | 0 |
| Erosion                                 | Erosion around the site will affect the structure  | - |
| Indiscriminate felling of trees         | Chain saw operators for construction purposes<br>Felling of trees around the site to pave away for construction                                      | - |
| Indiscriminate defecation               | Sanitation facilities of the project will prevent indiscriminate defecation and instill good sanitation practices among the youth                    | + |
| Wind storm                              | Wind storm may affect the structures as the environment is left bare without trees   | - |
| Sand winning                            | Sand winning for the construction will degrade the land  | - |
| <b>SOCIO-CULTURAL</b>                   |  |   |
| Teenage pregnancy                       | Improved adolescent health education will reduce teenage pregnancy   | + |
| Widowhood inheritance                   | Improved health cannot influence the practice of widowhood inheritance directly  | 0 |
| High drop- out rate among girls         | Improved health cannot influence drop- out directly  | 0 |
| Low enrolment and retention among girls | Improved health will not increase enrolment and retention rates directly   | 0 |
| High illiteracy rate and ignorance      | High illiteracy rate and ignorance will affect the use of the structure  | - |
| High Maternal Mortality                 | Improved health will reduce maternal mortality   | + |
| High Infant Mortality                   | Improved health will reduce infant mortality   | + |
| High OPD attendance esp. on malaria     | Improved health can reduce OPD attendance.   | + |
| Fause marriages                         | Improved health will not influence faused marriages directly   | 0 |
| Land disputes                           | Availability of land for construction may affect other uses such as farming  | - |
| <b>ECONOMIC ISSUES</b>                  |  |   |
| Low incomes                             | Improved health will increase hours of work, hence income levels<br>The people can also be engage in the construction work to increase their incomes | + |
| High seasonal unemployment              | The people can be employed in the construction works   | + |

|   |  |   |
|---|--|---|
|   |  |   |
| Poor economic infrastructure                    | Economic infrastructure is not dependent on health   | 0 |
| Low capacities of local Artisans and businesses | The artisans can be engaged in the construction works that will enhance technology transfer<br><br>The purchase of materials locally can also improve businesses | + |
| <b>INSTITUTIONAL</b>                            |  |   |
| Low community participation in dep't            | Involvement of communities in planning and implementation of the projects will increase their participation in development                                       | + |
| Chieftaincy conflicts                           | improved health will not reduce chieftaincy disputes directly  | 0 |
| Low revenue generation                          | Project implementation will increase DA revenue  | + |
| Inadequate capacities of agencies and depts.    | Involvement of depts. and agencies in project planning and implementation will increase their capacities   | + |
| Non- operation of DA Sub-structures             | Involvement of Town/Area Councils and Unit committees in project planning and implementation will enhance their capacities to function.                          | + |

| 1.1 Sustainability Test  |  |                     |   |   |   |   |   |
|--|--|---------------------|---|---|---|---|---|
| <b>Description of Activity:</b> <i>Construct 2No 3- Unit Classroom Blocks ; health facilities</i>  |  |                     |   |   |   |   |   |
| CRITERIAL - BASIC AIMS AND OBJECTIVES  | INDICATORS   | PERFORMANCE MEASURE |   |   |   |   |   |
| <b>Effects of Natural Resources</b>  |  |                     |   |   |   |   |   |
| <b>Protected Areas and Wildlife:</b> <i>Should be conserved and these resource should be enhanced when practical</i>   | Sensitive areas shown on maps  | (0)                 | 1 | 2 | 3 | 4 | 5 |
| <b>Degraded Land:</b> <i>Areas vulnerable to degradation should be avoided, and already degraded land should be enhanced</i>   | Vulnerable areas shown on maps   | (0)                 | 1 | 2 | 3 | 4 | 5 |
| <b>Energy:</b> <i>The activity should encourage efficient energy use and maximize used of renewable rather than fossil fuels</i>   | Quantity and type of fuel/energy to be identified  | (0)                 | 1 | 2 | 3 | 4 | 5 |
| <b>Pollution:</b> <i>Discharge of pollutants and waste product to the atmosphere, water and land should be avoided</i>   | Quantity /type of pollutants and waste to be identified  | (0)                 | 1 | 2 | 3 | 4 | 5 |
| <b>Use of Raw Materials:</b> <i>All raw materials should be used with maximum efficiency</i>   | Quantity and type of materials   | (0)                 | 1 | 2 | 3 | 4 | 5 |
| <b>Rivers and Water Bodies:</b> <i>Should retained their natural character</i>   | Minimum flows/water levels to be set   | (0)                 | 1 | 2 | 3 | 4 | 5 |
| <b>Effects on Social and Cultural Conditions</b>   |  |                     |   |   |   |   |   |
| <b>Local Character:</b> <i>Cohesion of local communities should be enhance where practicable</i>   | Opinions of local communities to be assessed   | (0)                 | 1 | 2 | 3 | 4 | 5 |
| <b>Health and well being:</b> <i>Activities should benefit the work force, and local communities in terms of health and well being nutrition, shelter, education and cultural expression</i> | Number of people exposed to water borne disease, or lacking adequate food and shelter to be assessed | (0)                 | 1 | 2 | 3 | 4 | 5 |
| <b>Gender:</b> <i>Activities should empower women</i>  | Number of women to be empowered  | (0)                 | 1 | 2 | 3 | 4 | 5 |
| <b>Job Creation:</b> <i>The activities should create jobs for local people particularly women and young people</i>   | Number of people to be employed  | (0)                 | 1 | 2 | 3 | 4 | 5 |
| <b>Participation:</b> <i>Activity participation and involvement of local communities should be encouraged (especially vulnerable alluded section)</i>  | Level of participation proposed  | (0)                 | 1 | 2 | 3 | 4 | 5 |
| <b>Access to Land:</b>   | Number of the poor to be assisted  | (0)                 | 1 | 2 | 3 | 4 | 5 |

|  |   |     |   |   |   |   |   |
|--|---|-----|---|---|---|---|---|
| <b>Access to Water:</b> <i>Activity should improve access to land</i>  | Number of the poor to be assisted                   | (0) | 1 | 2 | 3 | 4 | 5 |
| <b>Access to Transport:</b> <i>Activity should improve access to water</i>   | Number of the poor to be assisted                   | (0) | 1 | 2 | 3 | 4 | 5 |
| <b>Sanitation:</b> <i>Activity should improve access to sanitation</i>   | Number of the poor to be assisted                   | (0) | 1 | 2 | 3 | 4 | 5 |
| <b>Equity:</b> <i>Adverse and beneficial impacts from development should be distributed equitable and should not discriminate against any groups</i>                           | Number of the poor to be benefit on equitable terms | (0) | 1 | 2 | 3 | 4 | 5 |
| <b>Vulnerability and Risk:</b> <i>Drought, bushfires flood crises and epidemics should be reduced</i>  | Occurrence to be noted and monitored                | (0) | 1 | 2 | 3 | 4 | 5 |
| <b><u>Effects on Economy</u></b>   |   |     |   |   |   |   |   |
| <b>Growth:</b> <i>The PPP should result in development that encourages and stable conditions of economic growth</i>  | Economic output to be evaluated                     | (0) | 1 | 2 | 3 | 4 | 5 |
| <b>Use of Local Materials and Services:</b> <i>The PPP should result in the use raw materials and services from local industries where possible</i>                            | Description of sources                              | (0) | 1 | 2 | 3 | 4 | 5 |
| <b>Local Investment of Capital:</b> <i>Development should encourage retention of capital and the development of downstream utilizing local raw materials product and labor</i> | Description of investment strategy                  | (0) | 1 | 2 | 3 | 4 | 5 |
| <b><u>Institutional Issues</u></b>   |   |     |   |   |   |   |   |
| <b>Adherence to Democratic:</b> <i>Poverty on the part on women should be address</i>  |   | (0) | 1 | 2 | 3 | 4 | 5 |
| <b>Access to Information:</b> <i>The Activity should be enhance</i>  |   | (0) | 1 | 2 | 3 | 4 | 5 |
| <b>Inadequate Office:</b> <i>The activity should be improved</i>   |   | (0) | 1 | 2 | 3 | 4 | 5 |
| <b>Regulating the PPP should ensure best practice and compliance with environmental standard guidelines</b> <i>The activity should be improved</i>                             |   | (0) | 1 | 2 | 3 | 4 | 5 |

| 1.2 Sustainability Test  |  |                     |   |   |   |   |   |
|--|--|---------------------|---|---|---|---|---|
| Description of Activity: <i>construction of</i>  |  |                     |   |   |   |   |   |
| CRITERIAL - BASIC AIMS AND OBJECTIVES  | INDICATORS   | PERFORMANCE MEASURE |   |   |   |   |   |
| <b>Effects of Natural Resources</b>  |  |                     |   |   |   |   |   |
| <b>Protected Areas and Wildlife:</b> <i>Should be conserved and these resource should be enhanced when practical</i>   | Sensitive areas shown on maps  | (0)                 | 1 | 2 | 3 | 4 | 5 |
| <b>Degraded Land:</b> <i>Areas vulnerable to degradation should be avoided, and already degraded land should be enhanced</i>   | Vulnerable areas shown on maps   | (0)                 | 1 | 2 | 3 | 4 | 5 |
| <b>Energy:</b> <i>The activity should encourage efficient energy use and maximize used of renewable rather than fossil fuels</i>   | Quantity and type of fuel/energy to be identified  | (0)                 | 1 | 2 | 3 | 4 | 5 |
| <b>Pollution:</b> <i>Discharge of pollutants and waste product to the atmosphere, water and land should be avoided</i>   | Quantity /type of pollutants and waste to be identified  | (0)                 | 1 | 2 | 3 | 4 | 5 |
| <b>Use of Raw Materials:</b> <i>All raw materials should be used with maximum efficiency</i>   | Quantity and type of materials   | (0)                 | 1 | 2 | 3 | 4 | 5 |
| <b>Rivers and Water Bodies:</b> <i>Should retained their natural character</i>   | Minimum flows/water levels to be set   | (0)                 | 1 | 2 | 3 | 4 | 5 |
| <b>Effects on Social and Cultural Conditions</b>   |  |                     |   |   |   |   |   |
| <b>Local Character:</b> <i>Cohesion of local communities should be enhance where practicable</i>   | Opinions of local communities to be assessed   | (0)                 | 1 | 2 | 3 | 4 | 5 |
| <b>Health and well being:</b> <i>Activities should benefit the work force, and local communities in terms of health and well being nutrition, shelter, education and cultural expression</i> | Number of people exposed to water borne disease, or lacking adequate food and shelter to be assessed | (0)                 | 1 | 2 | 3 | 4 | 5 |
| <b>Gender:</b> <i>Activities should empower women</i>  | Number of women to be empowered  | (0)                 | 1 | 2 | 3 | 4 | 5 |
| <b>Job Creation:</b> <i>The activities should create jobs for local people particularly women and young people</i>   | Number of people to be employed  | (0)                 | 1 | 2 | 3 | 4 | 5 |
| <b>Participation:</b> <i>Activity participation and involvement of local communities should be encouraged (especially vulnerable alluded section)</i>  | Level of participation proposed  | (0)                 | 1 | 2 | 3 | 4 | 5 |
| <b>Access to Land:</b>   | Number of the poor to be assisted  | (0)                 | 1 | 2 | 3 | 4 | 5 |
| <b>Access to Water:</b> <i>Activity should improve access to land</i>  | Number of the poor to be assisted  | (0)                 | 1 | 2 | 3 | 4 | 5 |

|  |   |     |   |   |   |   |   |
|--|---|-----|---|---|---|---|---|
| <b>Access to Transport:</b> <i>Activity should improve access to Transport</i>   | Number of the poor to be assisted                   | (0) | 1 | 2 | 3 | 4 | 5 |
| <b>Sanitation:</b> <i>Activity should improve access to transport</i>  | Number of the poor to be assisted                   | (0) | 1 | 2 | 3 | 4 | 5 |
| <b>Equity:</b> <i>Adverse and beneficial impacts from development should be distributed equitable and should not discriminate against any groups</i>                           | Number of the poor to be benefit on equitable terms | (0) | 1 | 2 | 3 | 4 | 5 |
| <b>Vulnerability and Risk:</b> <i>Drought, bushfires flood crises and epidemics should be reduced</i>  | Occurrence to be noted and monitored                | (0) | 1 | 2 | 3 | 4 | 5 |
| <b>Effects on Economy</b>  |   |     |   |   |   |   |   |
| <b>Growth:</b> <i>The PPP should result in development that encourages and stable conditions of economic growth</i>  | Economic output to be evaluated                     | (0) | 1 | 2 | 3 | 4 | 5 |
| <b>Use of Local Materials and Services:</b> <i>The PPP should result in the raw use materials and services from local industries where possible</i>                            | Description of sources                              | (0) | 1 | 2 | 3 | 4 | 5 |
| <b>Local Investment of Capital:</b> <i>Development should encourage retention of capital and the development of downstream utilizing local raw materials product and labor</i> | Description of investment strategy                  | (0) | 1 | 2 | 3 | 4 | 5 |
| <b>Institutional Issues</b>  |   |     |   |   |   |   |   |
| <b>Adherence to Democratic:</b> <i>Poverty on the part on women should be address</i>  |   | (0) | 1 | 2 | 3 | 4 | 5 |
| <b>Access to Information:</b> <i>The Activity should be enhance</i>  |   | (0) | 1 | 2 | 3 | 4 | 5 |
| <b>Inadequate Office:</b> <i>The activity should be improved</i>   |   | (0) | 1 | 2 | 3 | 4 | 5 |
| <b>Regulating the PPP should ensure best practice and compliance with environmental standard guidelines</b> <i>The activity should be improved</i>                             |   | (0) | 1 | 2 | 3 | 4 | 5 |